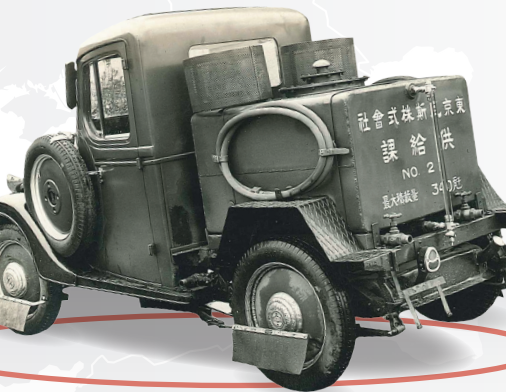


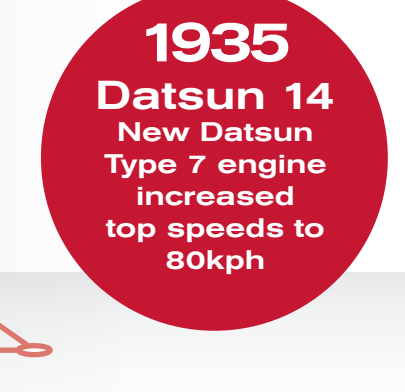


Innovation  
that excites

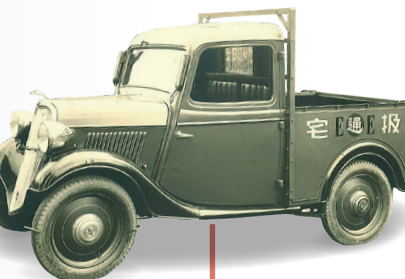
## NISSAN'S 80 YEARS OF PICK-UP HERITAGE



**1933**  
Datsun 12  
Production of Nissan's  
first small commercial  
vehicle begins



**1935**  
Datsun 14  
New Datsun  
Type 7 engine  
increased  
top speeds to  
80kph



**1936**  
Datsun 15T  
Engine  
compressions  
increased to  
5.4:1, raising  
output to 16hp



**1938**  
Datsun 17T

World War II  
halts  
production

**1943**



**1948**  
Datsun  
2225



**1946**  
Datsun 1121



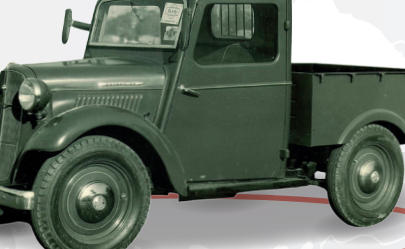
**1949**  
Datsun  
3135



**1951**  
Datsun 5147



**1950**  
Datsun 4146  
New D10 engine  
(20hp) introduced,  
the first new  
engine since the  
end of World War II



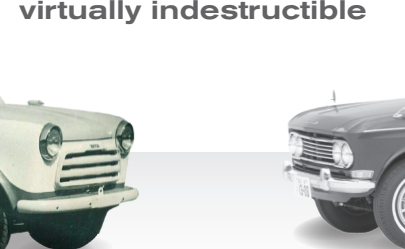
**NISSAN  
PICK-UPS  
AVAILABLE  
IN OVER 180  
COUNTRIES**



**1955**  
Datsun 120  
Completely new chassis  
and suspension design  
with longitudinal  
leaf springs.



**1953**  
Datsun 6147  
Last in series of original  
Datsun pick-ups. Powered by  
improved 25hp D10 engine



**1957**  
Datsun 220  
First pick-up fitted  
with a 12-volt  
electrical system



**1965**  
Datsun 520



**1972**  
Datsun 620  
First model to offer King  
Cab and Double Cab



**1979**  
Datsun 720  
First model to offer a  
4WD variant to meet  
recreational pick-up use



**1985**  
Pick-up (D21)



**1997**  
Pick-up (D22)  
Introduced with five engines:  
2 litre, two types of 2.4 litre  
4-cylinder petrol engines,  
2.7 litre and 3.2 litre



**2005**  
Navara (D40)  
Global launch of new  
Nissan pick-up with  
'Navara' name badge



**2014**  
The next  
chapter begins  
with the all-new  
NP300 Navara

**THE ALL-NEW  
NP300 NAVARA  
ARRIVES IN  
EUROPE**



**2015**

**OVER 14 MILLION  
PICK-UPS SOLD**